



Way of Life!



**SWIFT**  
**SWIFT**  
*Sport*

**ACCESSORIES**  
**CATALOGUE**



37

36

*Sport*



# GREAT JUST GOT GREATER

With the new Swift and Swift Sport our designers knew only one direction: forward! Every line, every edge and every detail shows that the cars want to get on the road. Your eyes immediately realize that it is an extraordinary vehicle. And your heart tells you to get started right away.

# EXTERIOR STYLE PACKAGES



1



## 1 | STYLE PACKAGE ■

Package includes:

- Body decal set, silver
- Door mirror decal, silver
- Lip decal front bumper, carbon design
- Front grille
- Front grille garnish, burning red or speedy blue

### STYLE PACKAGE I

With front grille garnish burning red.

For vehicles with radar sensor.

**Part No. 99PAK-SFT01-ST1**

For vehicles without radar sensor.

**Part No. 99PAK-SFT02-ST1**

### STYLE PACKAGE II

With front grille garnish speedy blue.

For vehicles with radar sensor.

**Part No. 99PAK-SFT01-ST2**

For vehicles without radar sensor.

**Part No. 99PAK-SFT02-ST2**

# INTERIOR PACKAGES



## 1-4 | INTERIOR PACKAGES

- Package includes:
- Instrument panel garnish
  - Console box garnish
  - Front door trim garnish

**1 | BURNING RED** ■ ■  
Part No. 99PAK-SFT30-BRP



2 | PEARL WHITE ■ ■  
Part No. 99PAK-SFT30-PWP



3 | PIANO BLACK ■ ■  
Part No. 99PAK-SFT30-PBP



4 | SILVER ■ ■  
Part No. 99PAK-SFT30-SLP



# EXTERIOR



## 1+2 | BODY DECAL SET ■

Package includes:

- Hood decal
- Lip decal fog lamp
- Shoulder decal
- Rear hatch decal

## 1 | SILVER

Part No. 990E0-53R95-SLV

## 2 | BLACK

Part No. 990E0-53R95-BLA

1



2





3-6 | BODY DECAL SET "SPORT" ■

3 | GREY/BLUE

Part No. 990E0-68R92-BLU

4 | GREY/YELLOW

Part No. 990E0-68R92-YEL

5 | GREY/GREY

Part No. 990E0-68R92-GRE

6 | GREY/RED

Part No. 990E0-68R92-RED



3



4



6



7+8



**7 | FRONT GRILLE<sup>1</sup>**

Grille with honeycomb structure and chrome outline.

For vehicles with radar sensor.

**Part No. 990E0-53R11-000**

For vehicles without radar sensor (no image).

**Part No. 990E0-53R11-001**

**8 | FRONT GRILLE GARNISH<sup>2</sup>**

Coloured accent line for front grille.

Available in following colours:

Chrome

**Part No. 990E0-53R12-0PG**

Burning red pearl metallic

**Part No. 990E0-53R12-ZWP**

Speedy blue metallic

**Part No. 990E0-53R12-ZWG**

**9 | ROOF EDGE SPOILER**

Available in following colours:

Super black pearl metallic

**Part No. 990E0-53R19-ZMV**

Pure white pearl

**Part No. 990E0-53R19-ZVR**

Speedy blue metallic

**Part No. 990E0-53R19-ZWG**

Burning red pearl metallic

**Part No. 990E0-53R19-ZWP**

Fervent red

**Part No. 990E0-53R19-ZNB**

Premium silver metallic

**Part No. 990E0-53R19-ZNC**

Mineral grey metallic

**Part No. 990E0-53R19-ZMW**

**10 | LIP DECAL FRONT BUMPER**

One-piece, carbon design.

**Part No. 990E0-53R97-000**

**11 | LIP DECAL FRONT BUMPER**

One-piece, yellow.

**Part No. 990E0-68R91-000**

9



10



11



■ Available for Swift ■ Available for Swift Sport



**12 | FRONT UNDER SPOILER<sup>3, 4</sup> ■**

Diffuser style, carbon design.

**Part No. 990E0-53R44-000**

**13 | SIDE UNDER SPOILER<sup>3, 4, 5</sup> ■**

Carbon design, for right and left hand side.

**Part No. 990E0-53R26-000**

**14 | REAR UNDER SPOILER<sup>3, 4, 6, 7</sup> ■**

Diffuser style, carbon design.

**Part No. 990E0-53R47-000**

**15 | FRONT FOG LAMP GARNISH CHROME ■**

Two-piece set, fog lamp kit not included.

For headlamp integrated DRL equipped models.

**Part No. 990E0-53R28-000**

For independent DRL equipped models.

**Part No. 990E0-53R23-000**

**16 | FRONT FOG LAMP KIT ■**

For GL models only (chrome garnish not included).

LHD Version **Part No. 990E0-53R51-000**

RHD Version **Part No. 990E0-53R51-010**

**17 | LOGO SHADOW LIGHT SWIFT SPORT ■**

Swift Sport logo projected on ground when opening the front doors. Two-piece set.

**Part No. 990E0-53R27-000**

<sup>1</sup> Only in combination with front grille garnish, Part No. 990E0-53R12-OPG/-ZWG/-ZWP which needs to be ordered separately.

<sup>2</sup> Front grille garnish is not included in front grille and needs to be ordered separately. It can only be installed in combination with front grille, Part No. 990E0-53R11-001 (without radar sensor) or Part No. 990E0-53R11-000 (with radar sensor).

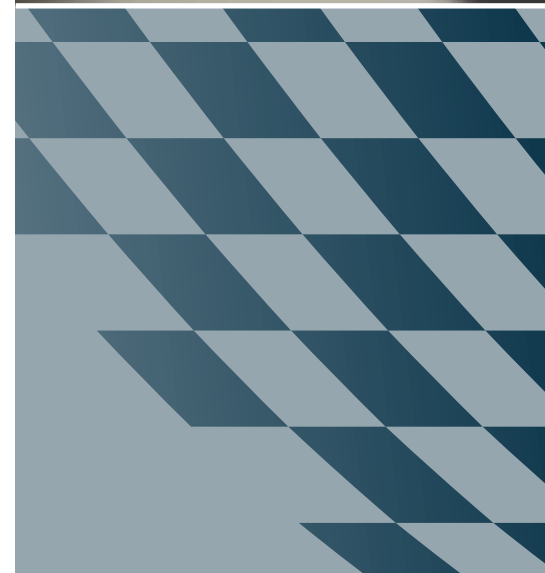
<sup>3</sup> Not in combination with fender extension incl. side skirts, Part No. 990E0-53R10-000.

<sup>4</sup> Only applicable for vehicles with Vehicle Identification Number (VIN) from ...200.001.

<sup>5</sup> Not in combination with mud flap set, rigid, Part No. 72201-53R00-000 or mud flaps flexible, front, Part No. 990E0-53R13-000.

<sup>6</sup> Not in combination with mud flap set, rigid, Part No. 72201-53R00-000 or mud flaps flexible, rear, Part No. 990E0-53R14-000.

<sup>7</sup> Not in combination with tow bar detachable, Part No. 72901-53R00-000.



18

**18 | DOOR HANDLE ESCUTCHEON** ■ ■

Two-piece set, carbon design.

**Part No. 990E0-53R04-000**

19

**19 | DOOR HANDLE COVER**<sup>8</sup> ■

Silver painted, set for front door handles for LHD and RHD.

For cars with keyless go system.

**Part No. 990E0-53R45-000**

For cars without keyless go system (no image).

**Part No. 990E0-53R46-000**

20

**20 | DOOR HANDLE COVER** ■

Black painted, two piece set for front door handles for LHD and RHD.

**Part No. 990E0-53R48-000**

21

**21 | FUEL LID COVER** ■ ■

Embossed aluminium with carbon designed evotec and Swift logo.

**Part No. 990E0-53R09-000****22 | REAR HATCH MOULDING**<sup>9</sup> ■ ■

Chrome

**Part No. 990E0-53R22-000****23 | BUMPER LOADING EDGE PROTECTION FOIL** ■ ■

Three-piece set, foil that protects your bumper from scratches.

Available in following versions:

Black/transparent

**Part No. 990E0-53R57-000**

Transparent

**Part No. 990E0-53R57-001**<sup>8</sup> Only applicable for vehicles with Vehicle Identification Number (VIN) from ...200.001).<sup>9</sup> Not in combination with body decal set silver, Part No. 990E0-53R95-SLV or body decal set, black, Part No. 990E0-53R95-BLA.

22



23





24



24



**24 | OUTSIDE MIRROR COVER** ■ ■ ■

Two piece set, for cars with mirror blinkers.

Available in following colours:

Chrome

**Part No. 990E0-53R07-0PG**

Burning red pearl metallic

**Part No. 990E0-53R07-ZWP**

Speedy blue metallic

**Part No. 990E0-53R07-ZWG**

Premium silver metallic

**Part No. 990E0-53R07-ZNC**

Super black pearl metallic

**Part No. 990E0-53R07-ZMV**

**25 | OUTSIDE MIRROR COVER** ■ ■ ■

Two piece set, for cars without mirror blinkers (no images).

Available in following colours:

Chrome

**Part No. 990E0-53R08-0PG**

Burning red pearl metallic

**Part No. 990E0-53R08-ZWP**

Speedy blue metallic

**Part No. 990E0-53R08-ZWG**

Premium silver metallic

**Part No. 990E0-53R08-ZNC**



24



26



**26 | DOOR MIRROR DECAL** ■ ■ ■

Two-piece set, for outside mirror with and without blinker.

Available in following colours:

Silver

**Part No. 990E0-53R96-SLV**

Black

**Part No. 990E0-53R96-BLA**

27



**27 | RAIN AND WIND DEFLECTOR SET** ■ ■

Four-piece set, smoked grey, for front and rear windows, with Swift logo.

**Part No. 990E0-53R05-000**

**28 | BUMPER CORNER PROTECTION<sup>10</sup>** ■

Black, for front and rear bumper, four-piece set.

**Part No. 990E0-53R06-000**

**29 | FENDER EXTENSION<sup>10, 11, 12, 13, 14, 15</sup>** ■

Fender extension incl. side skirts. Complete set for one car covering front and rear fenders including side skirts.

**Part No. 990E0-53R10-000**

**30 | SIDE BODY MOULDING** ■ ■

Black, for left and right hand side, four-piece set.

**Part No. 990E0-53R07-000**



28



29



30



31



32



### 31 | MUD FLAPS FLEXIBLE ■

Two-piece set, front.<sup>13, 16</sup>

**Part No. 990E0-53R13-000**

Two-piece set, rear.<sup>15, 16</sup>

**Part No. 990E0-53R14-000**

### 32 | MUD FLAP SET RIGID<sup>13, 15, 16</sup> ■

Black, set for front and rear, four-piece set.

**Part No. 72201-53R00-000**

<sup>10</sup> Only applicable for vehicles with Vehicle Identification Number (VIN) from ...200.001).

<sup>11</sup> Not in combination with mud flap set, rigid, Part No. 72201-53R00-000 or mud flaps flexible, front, Part No. 990E0-53R13-000.

<sup>12</sup> Not in combination with mud flap set, rigid, Part No. 72201-53R00-000 or mud flaps flexible, rear, Part No. 990E0-53R14-000.

<sup>13</sup> Not in combination with side under spoilers, Part No. 990E0-53R26-000.

<sup>14</sup> Not in combination with front under spoiler, Part No. 990E0-53R44-000.

<sup>15</sup> Not in combination with rear under spoiler, Part No. 990E0-53R47-000.

<sup>16</sup> Not in combination with fender extension incl. side skirts, Part No. 990E0-53R10-000.



33



34

### 33 | ALLOY WHEEL "SAMBA" ■

Silver painted, 5Jx15" alloy wheel for 175/65R15 tires, centre cap with Suzuki logo.

**WVTA homologation.**

**Part No. 43210-60PU0-OKS**

### 34 | ALLOY WHEEL "SAMBA" ■

Black polished, 5Jx15" alloy wheel for 175/65R15 tires, centre cap with Suzuki logo.

**WVTA homologation.**

**Part No. 43210-60PS0-OSP**

### 35 | WHEEL COVER ■

For 15" steel wheel, one piece.

**Part No. 43250-52R00-ZH1**



35



36+37

### 36 | WHEEL BOLT COVER ■

Champion yellow (ZFT) five-piece set for one wheel.

**Part No. 990E0-61M70-ZFT**

### 37 | CENTER CAP YELLOW ■

Champion yellow (ZFT) four-piece set for one car.

**Part No. 990E0-53R00-ZFT**

### 38 | ALLOY WHEEL "COSMIC" ■

Metal grey matt polished, 5Jx15" alloy wheel for 175/65R15 tires, centre cap with Suzuki logo.

**ECE approval.**

**Part No. 43210-52RS0-000**

### 39 | ALLOY WHEEL "COSMIC" ■

Mistral anthracite matt painted, 5Jx15" alloy wheel for 175/65R15 tires, centre cap with Suzuki logo.

**ECE approval.**

**Part No. 43210-52RU0-000**



38



39

■ Available for Swift ■ Available for Swift Sport





40



40



#### 40 | Wheel Decal ■

For OE factory 17" alloy wheel with Swift Sport logo, four-piece set for one vehicle.

Burning red pearl metallic  
**Part No. 990E0-68R10-001**

Speedy blue metallic  
**Part No. 990E0-68R10-002**

Champion yellow  
**Part No. 990E0-68R10-003**

#### 41 | WHEEL DECAL ■

For 16" factory alloy wheel only, 20 decals per set for one vehicle.

Speedy blue  
**Part No. 990E0-53R13-ZWG**

Burning red  
**Part No. 990E0-53R13-ZWP**

#### 42 | WHEEL LOCKS „SICUSTAR“ ■ ■

Four-piece set, with Thatcham approval.

**Part No. 990E0-59J47-000**

#### 43 | WHEEL LOCKS „SICURIT“ ■ ■

Four-piece set (no image).

**Part No. 990E0-59J49-000**

#### 44 | VALVE CAP SET WITH S-LOGO ■ ■

Four-piece set.

**Part No. 990E0-19069-SET**

#### 45 | SPARE TIRE KIT<sup>17</sup>

Includes spare tire, fixation kit and jack (no image).

For Swift 2WD  
**Part No. 990E0-STSW2-001**

For Swift 4WD  
**Part No. 990E0-STSW4-001**

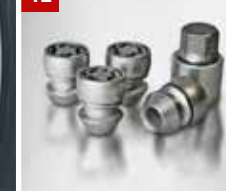
For Swift Sport  
**Part No. 990E0-STSW5-000**



41



42



44



<sup>17</sup>Not in combination with cargo tray Part No. 990E0-53R15-000, cargo organizer Part No. 990E0-53R21-000.

# INTERIOR



## 1 | INSTRUMENT PANEL GARNISH ■ ■

Available in following colours:

Pure white pearl

**LHD Part No. 990E0-53R02-QHL**

**RHD Part No. 990E0-53R01-QHL**

Piano black

**LHD Part No. 990E0-53R02-OCE**

**RHD Part No. 990E0-53R01-OCE**

Burning red pearl metallic

**LHD Part No. 990E0-53R02-ZWP**

**RHD Part No. 990E0-53R01-ZWP**

Premium silver metallic

**LHD Part No. 990E0-53R02-PSG**

**RHD Part No. 990E0-53R01-PSG**



## 2 | CONSOLE BOX GARNISH ■ ■

Available in following colours:

Pure white pearl

**Part No. 990E0-53R03-QHL**

Piano black

**Part No. 990E0-53R03-OCE**

Burning red pearl metallic

**Part No. 990E0-53R03-ZWP**

Premium silver metallic

**Part No. 990E0-53R03-PSG**



### 3 | FRONT DOOR TRIM GARNISH ■ ■

Two-piece set.

Available in following colours:

Pure white pearl

**Part No. 990E0-53R04-QHL**

Piano black

**Part No. 990E0-53R04-OCE**

Burning red pearl metallic

**Part No. 990E0-53R04-ZWP**

Premium silver metallic

**Part No. 990E0-53R04-PSG**





**4 | PARKING BRAKE HANDLE COVER** ■ ■

Leather, with red stitching.  
**Part No. 990E0-53R17-000**



**5 | ANTI-SLIP INLAY** ■ ■

For the centre console to prevent content rattling or moving around.  
**Part No. 990E0-53R20-000**



**6 | SMOKERS KIT** ■ ■

Contains cigarette lighter and ashtray (no image).  
**Part No. 990E0-68P00-SMK**

**7 | CENTER ARMREST** ■ ■

For more comfort, with storage department, adjustable in height and length, black.

**Part No. 990E0-53R35-000**



**8 | ARMREST CONSOLE BOX** ■ ■

With large storage compartment.

**Part No. 990E0-53R36-000**





- 9 | FLOOR MAT SET "DLX" ■**  
 Anthracite velour carpets with silver stitched logo and Nubuk binding, four-piece set, for M/T and A/T.  
**LHD Part No. 75901-52RG0-000**  
**RHD Part No. 75901-52RF0-000**



- 10 | FLOOR MAT SET "ECO" ■**  
 Anthracite needle felt carpets with silver stitched logo and black binding, four-piece set, for M/T and A/T.  
**LHD Part No. 75901-52RE0-000**  
**RHD Part No. 75901-52RD0-000**



- 11 | RUBBER FLOOR MAT SET ■**  
 Raised edge to help keep the footwell clean, four-piece set, for M/T and A/T.  
**LHD Part No. 75901-52R10-000**  
**RHD Part No. 75901-52R00-000**

- 12 | FLOOR MAT SET "SPORT" ■**  
 Anthracite velour carpets with red stitched logo and Nubuk binding, Four-piece set, for M/T and A/T.  
**LHD Part No. 75901-68RB0-000**  
**RHD Part No. 75901-68RA0-000**

- 13 | COLOURED FLOOR MAT SET ■**  
 Anthracite velour carpets with silver stitched logo and black binding, four-piece set, for M/T and A/T.  
 Available in following versions:  
 Red colour for LHD  
**Part No. 990E0-53R16-WF9**  
 Red colour for RHD  
**Part No. 990E0-53R15-WF9**  
 Silver colour for LHD  
**Part No. 990E0-53R16-WGM**  
 Silver colour for RHD  
**Part No. 990E0-53R15-WGM**



**14 | DOOR SILL GUARDS ■**

Anodized aluminium satin surface, four-piece set, with polished Swift Sport logo.

**Part No. 990E0-68R60-000**

**15 | DOOR SILL GUARDS ■**

Anodized aluminium satin surface, four-piece set, with polished Swift logo.

**Part No. 990E0-53R60-000**

**16 | FLOOR ILLUMINATION ■ ■**

Optical white LED illumination, set for front and rear footwells, left and right side.

**Part No. 990E0-53R75-000**

**17 | DOOR SILL GUARDS ■**

Black including inlay printed Swift Sport logo, four-piece set.

**Part No. 990E0-68R60-001**

**18 | DOOR SILL GUARDS ■**

Black including inlay printed Swift logo, four-piece set.

**Part No. 990E0-53R60-001**



**19 | CARGO TRAY<sup>18</sup>** ■ ■

Waterproof with raised edges.

**Part No. 990E0-53R15-000**



**20 | CARGO MAT "ECO"** ■

Anthracite needle felt carpet with silver stitched logo and black binding.

**Part No. 990E0-53R40-000**



**21 | CARGO MAT "SPORT"** ■

Anthracite needle felt carpet with red stitched logo and red binding.

**Part No. 990E0-68R40-000**



**22 | CARGO ORGANIZER<sup>18</sup>** ■ ■

Tray including variable aluminium dividers and top cover.

**Part No. 990E0-53R21-000**

**23 | INNER LOADING EDGE PROTECTION** ■ ■

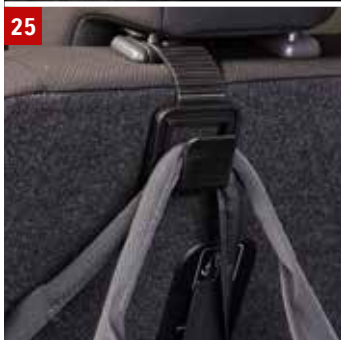
Aluminium brushed design, made of durable thermoplastic, protects your inner loading edge from scratches when loading and unloading.

**Part No. 990E0-53R52-000**









#### 24 | STORAGE BASKET ■ ■

For passenger compartment, waterproof, easy to unclip.

**Part No. 990F0-MLTR2-000**

#### 25 | CONVENIENCE SHOPPING HOOK ■ ■

Converts your car's headrest into a convenient storage space to hang your groceries or handbags. It keeps shopping bags from rolling around the floor and spilling their contents. Each pack contains 2 black hangers. Please observe max. load of 7.5 kg.

**Part No. 990E0-62R29-000**

#### 26 | CARGO SIDE PANEL NET<sup>19</sup> ■ ■

**Part No. 990E0-53R34-000**

#### 27 | FOLDABLE LUGGAGE BAG ■ ■

With two compartments.  
Dimensions: 25 x 30 x 55 cm  
Capacity: max. 40 litres

**Part No. 990F0-MLFB2-000**

#### 28 | REAR SEAT BAG ■ ■

One large compartment, two cup holders, one small zip-front compartment.

Capacity: approx. 25 litres

**Part No. 990F0-MLSB2-000**

#### 29 | COOLING BOX ■ ■

Connects to the 12V-socket.  
Capacity: 15 litres

**Part No. 990E0-64J30-000**

<sup>19</sup>Not in combination with cargo organizer, Part No. 990E0-53R21-000.





### 30 | CHILD SEAT "DUO PLUS" ■■

Child seat of group 1 for kids of 9 to 18 kg of weight or approx. 9 months to 4 years of age. This seat is tested and approved to the current Child Seat Safety Standard ECE R 44/04. Installation in the car by the ISOFIX brackets, the seat features optimum side impact protection, unique Forward Tilt Control, singlehanded adjustment to change from the upright position to the reclined and sleeping positions. 5-point harness system with one-pull adjustment, shoulder pads reduce the load in the neck/head area. The comfortable fabric cover is removable for washing. The seat can also be fitted in cars without the ISOFIX system by using the vehicle's 3-point seat belt.

**Part No. 990E0-59J56-000**



### 31 | CHILD SEAT "KIDFIX XP" ■■

The KIDFIX XP is a new child seat of group 2 and 3 and offers safety reassurance for parents and comfort for the older child from approximately 15 to 36 kg. This high back booster seat's innovative XP-PAD gives advanced frontal protection. This seat is tested and approved to the current Child Seat Safety Standard ECE R 44/04. Installation in the car by the ISOFIX brackets, the seat features optimum side impact protection. Its SecureGuard (patent pending) ensures optimal lap belt positioning. And its deep softly padded side wings offer cocooning safety for growing heads and neck from 4 to 12 years.

**Part No. 990E0-59J25-002**



# TRANSPORTATION

1



## 1 | ROOF BOX "CERTO 410"<sup>20</sup> ■ ■

Silver metallic with "Master-fit" system for quick and convenient mounting, can be opened from both sides, lockable.

Own weight: 14.5 kg  
Capacity: 400 litres  
Dimensions: 42x98x149 cm

**Part No. 990E0-62R43-000**

## 2 | ROOF BOX "CERTO 460"<sup>20</sup> ■ ■

Silver metallic with "Master-fit" system for quick and convenient mounting, can be opened from both sides, lockable (no image).

Own weight: 17.5 kg  
Capacity: 440 litres  
Dimensions: 42x82x192 cm

**Part No. 990E0-59J43-000**

3



4



## 3 | MULTI-ROOF RACK ■ ■

Aluminium tube with T-slot, lockable.

Own weight: 4.6 kg  
Max. roof load of vehicle: 30 kg

**Part No. 78901-53R00-000**

## 4 | ROOF RACK STORAGE BAG ■ ■

Black, with large Suzuki logo, for multi-roof rack.

**Part No. 990E0-79J91-000**

5



**5 | BIKE CARRIER “GIRO SPEED”<sup>20</sup>**

For transporting bikes without front wheel, one set for one bike, lockable.

Own weight: 2.5 kg

**Part No. 990E0-59J21-000**

6



**6 | BIKE CARRIER “GIRO AF”<sup>20</sup>**

For transporting complete bikes, one set for one bike, lockable.

Own weight: 2.9 kg

**Part No. 990E0-59J20-000**

7



**7 | SKI CARRIER “MCKINLEY”<sup>20</sup>**

For up to two snowboards or four pairs of skis, lockable.

Own weight: 2.0 kg

**Part No. 99000-990YT-106**

8



**8 | SKI CARRIER “EVEREST”<sup>20</sup>**

For up to four snowboards or six pairs of skis, lockable.

Own weight: 3.0 kg

**Part No. 99000-990YT-107**

**9 | TOW BAR<sup>21</sup>**

Detachable, for trailers only.

**Part No. 72901-53R00-000**

**10 | E-KIT**

7-pin with control, LHD.

**Part No. 990E0-53R64-000**

13-pin with control, LHD.

**Part No. 990E0-53R65-000**

13-pin with control, RHD.

**Part No. 990E0-53R66-000**

**11 | ADAPTER**

To connect 7-pin plug to 13-pin socket.

**Part No. 990E0-62J41-000**

**12 | ADAPTER**

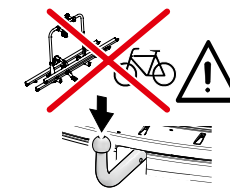
To connect 13-pin plug to 7-pin socket.

**Part No. 990E0-79J67-000**

**13 | REAR SEAT PROTECTIVE COVER<sup>22</sup>**

**Part No. 990E0-79J44-000**

9+10



Not for use of rear bike carrier

11



12



13



<sup>20</sup> Only in combination with multi-roof rack, Part No. 78901-53R00-000. Please observe the max. roof load of vehicle: 30 kg.

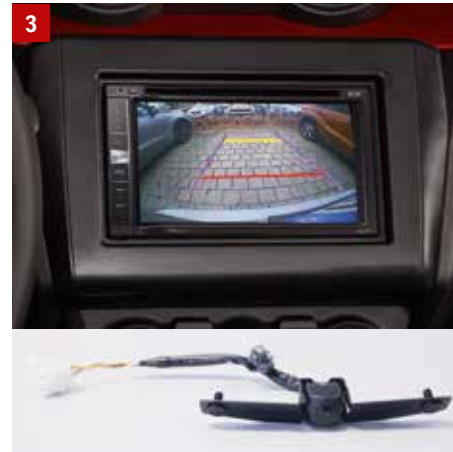
<sup>21</sup> Please observe the max. vertical load of 60 kg and the max. towing capacity. Consult your owner's manual for further information.

<sup>22</sup> Please ensure pets and goods are secured while driving.

# USEFUL ITEMS



2



**1 | PARKING SENSOR REAR** ■ ■  
Four-piece set, paintable.  
**Part No. 990E0-68P53-020**

**2 | RAIN SENSOR** ■ ■  
Automatically controls windscreen wipers.  
**Part No. 990E0-65J81-030**

**3 | REAR VIEW CAMERA**<sup>23</sup>  
Only in combination with Pioneer AVIC navigation systems, requires adapter cable.  
For Swift  
**Part No. 39970-53R00-000**  
For Swift Sport  
**Part No. 39970-68R00-000**

**4 | ADAPTER CABLE FOR REAR VIEW CAMERA** ■ ■  
Fits for all Pioneer AVIC navigation systems (no image).  
**Part No. 990E0-53R02-000**



### 5 | USB SOCKET<sup>24</sup> ■

Installed at rear end of centre console.

**Part No. 990E0-53R00-USB**

### 6 | TWEETER SET ■

High note front speaker set for left and right side includes:

- Tweeter
- Tweeter covers
- Harness set for connection to tweeter

**Part No. 990E0-53R18-000**

### 7 | DEODORANT FILTER ■ ■ ■

Filters dust, pollen, sand, mites, unpleasant odours from outside and inside the car and other air impurities including the PM2.5 capturing effect which keeps the air in a cabin cleaner than the standard A/C filter.

**Part No. 990E0-53R24-000**

### 8 | FIRST AID KIT

Including warning triangle and a safety vest, complies with DIN 13164.

**Part No. 990E0-61M79-000**

### 9 | BATTERY CHARGER

Maintainer and tester for 12V batteries, optimizes battery power and life.

**Part No. 990E0-OPTIM-CAR**

### 10 | TOUCH-UP PAINT

Available in following colours:

Burning red pearl metallic

**Part No. 99000-10415-ZWP**

Speedy blue metallic

**Part No. 99000-10415-ZWG**

Pure white pearl

**Part No. 99000-10415-ZVR**

Super black pearl metallic

**Part No. 99000-10415-ZMV**

Premium silver metallic

**Part No. 99000-10415-ZNC**

Mineral grey metallic

**Part No. 99000-10415-ZMW**

Fervent red

**Part No. 99000-10315-ZNB**

Champion yellow

**Part No. 99000-10315-ZFT**



<sup>23</sup> Please order adapter cable (Part No. 990E0-53R02-000) and screw nuts (2x Part No. 09159-06076-000) separately.

<sup>24</sup> Not applicable for vehicles with keyless go.

# APPAREL & MERCHANDISE

1



## 1 | SWIFT T-SHIRT MEN

Red with blue double layer on neck and seam, fitted breast pocket.

Material: 100% cotton single jersey  
S/M/L/XL/XXL/3XL

Part No. 990F0-SWTM1-size

2

## 2 | SWIFT T-SHIRT LADIES

Red with blue double layer on neck and seam, ladies-fit, fitted breast pocket.

Material: 100% cotton single jersey  
XS/S/M/L/XL

Part No. 990F0-SWTL1-size

3



## 3 | SWIFT POLO SHIRT MEN

Red with blue contrast colour, fitted breast pocket.

Material: 100% cotton piquet  
S/M/L/XL/XXL/3XL

Part No. 990F0-SWPM1-size

4

## 4 | SWIFT POLO SHIRT LADIES

Red with blue contrast colour, ladies-fit, fitted breast pocket.

Material: 100% cotton piquet  
XS/S/M/L/XL

Part No. 990F0-SWPL1-size

5



## 5 | SWIFT SWEAT JACKET

Blue with shroud and zip puller in red contrast colour, unisex, two side pockets.

Material: 80% cotton, 20% polyester  
XS/S/M/L/XL/XXL/3XL

Part No. 990F0-SWSJ1-size

6



## 6 | SWIFT BEACH TOWEL

Material: 100% cotton  
Dimensions: 140 x 70 cm

Part No. 990F0-SWTWL-000

7



## 7 | SWIFT LANYARD

Red and blue neopren.

Part No. 990F0-SWLAN-000

8



## 8 | SWIFT WATCH

Black stainless steel case, red caoutchouc strap, 3 ATM water resistant, mineral glass.  
Diameter: 44 mm

Part No. 990F0-SWWA1-000



# SWIFT *Sport*

9



## 9 | SWIFT SPORT LIGHT JACKET

Dark grey light jacket with yellow mesh lining and printed details and logos, outer material 96% polyester, 4% elastane, inner lining 100% polyester.

S/M/L/XL/XXL/3XL

**Part No. 990F0-SPLJ1-size**

12



13



## 10 | SWIFT SPORT POLO SHIRT MEN

Yellow/grey polo shirt with zip and printed details, 100% polyester.

S/M/L/XL/XXL/3XL

**Part No. 990F0-SPPM1-size**

## 11 | SWIFT SPORT POLO SHIRT LADIES

Yellow/grey ladies cut polo shirt with zip and printed details logos, 100% polyester.

XS/S/M/L/XL

**Part No. 990F0-SPPL1-size**

10



## 12 | SWIFT SPORT WRIST WATCH

Black brushed aluminium case, black leather strap with carbon structure and yellow clock face, 3 ATM water resistant, mineral glass, diameter: 45 mm.

**Part No. 990F0-SPWA1-000**

14



## 13 | SWIFT SPORT CAP

Yellow/grey cap with embroidered and printed details and logos, 100% polyester.

One size fits all.

**Part No. 990F0-SPCAP-000**

15



## 14 | SWIFT SPORT PEN

Real carbon roller ball pen with cap and lasered Swift Sport logo.

**Part No. 990F0-SPPEN-000**

## 15 | SWIFT SPORT KEY RING

Yellow/grey looped rubber key ring with Swift Sport logo.

**Part No. 990F0-SPKEY-000**

11



### 16 | SWIFT DIE-CAST CAR<sup>25</sup>

Quality-made 1:43-scale miniature metal car for collectors – not a toy!

Burning red pearl metallic

**LHD Part No. 99000-79N12-SWL**

**RHD Part No. 99000-79N12-SWR**

### 17 | SWIFT PULL-BACK CAR

1:43-scale miniature toy car.

Available in following colours:

Burning red pearl metallic

**Part No. 99000-79N12-SW1**

Speedy blue metallic

**Part No. 99000-79N12-SW2**

### 18 | SWIFT SPORT DIE-CAST CAR<sup>25</sup>

Quality-made 1:43-scale miniature metal car for collectors – not a toy!

Champion yellow

**LHD Part No. 99000-79N12-SSL**

### 19 | SWIFT SPORT PULL-BACK CAR

1:43-scale miniature toy car.

Available in following colours:

Champion yellow

**Part No. 99000-79N12-SS1**

Pure white pearl

**Part No. 99000-79N12-SS2**



<sup>25</sup> Die-cast miniature cars are offered not as toys and are only to be promoted as collector's items.

# AUDIO & NAVIGATION

Suzuki audio and navigation accessory systems are some of the most sophisticated on the road. Upgrade satellite navigation ensures that you reach your destination effortlessly. Accessory audio keeps you entertained and, thanks to mobile connectivity, you can plot your route and select a playlist for the stereo using voice commands to your phone. For detailed information please check our separate Audio & Navigation catalogue.



Suzuki Genuine Accessories have been specially designed for Suzuki cars and are subject to the same quality standards as the car. Please note that only Suzuki Genuine Accessories have been tested and cleared for use by Suzuki. The necessary instructions can be found in the relevant manuals. It is possible under some circumstances that the installation and/or use of other accessory parts could have a negative effect on the structural characteristics of your car and thus reduce driving safety. Suzuki cannot accept any liability for damage caused by the use of accessories other than Suzuki Genuine Accessories.

On publication of this brochure all earlier information ceases to be valid. Some of the brochure's illustrations show special equipment.

The details given in this brochure are non-binding and are purely for informational purposes. Errors excepted.

We kindly ask you to make sure that all legal requirements are fulfilled in your country when using the range of Suzuki accessories.

Last update: August 2018



**Suzuki's "Way of Life!" is the heart of our brand - every Suzuki vehicle, motorcycle and outboard motor is built to create excitement so customers can enjoy everyday life.**



Your Suzuki Partner